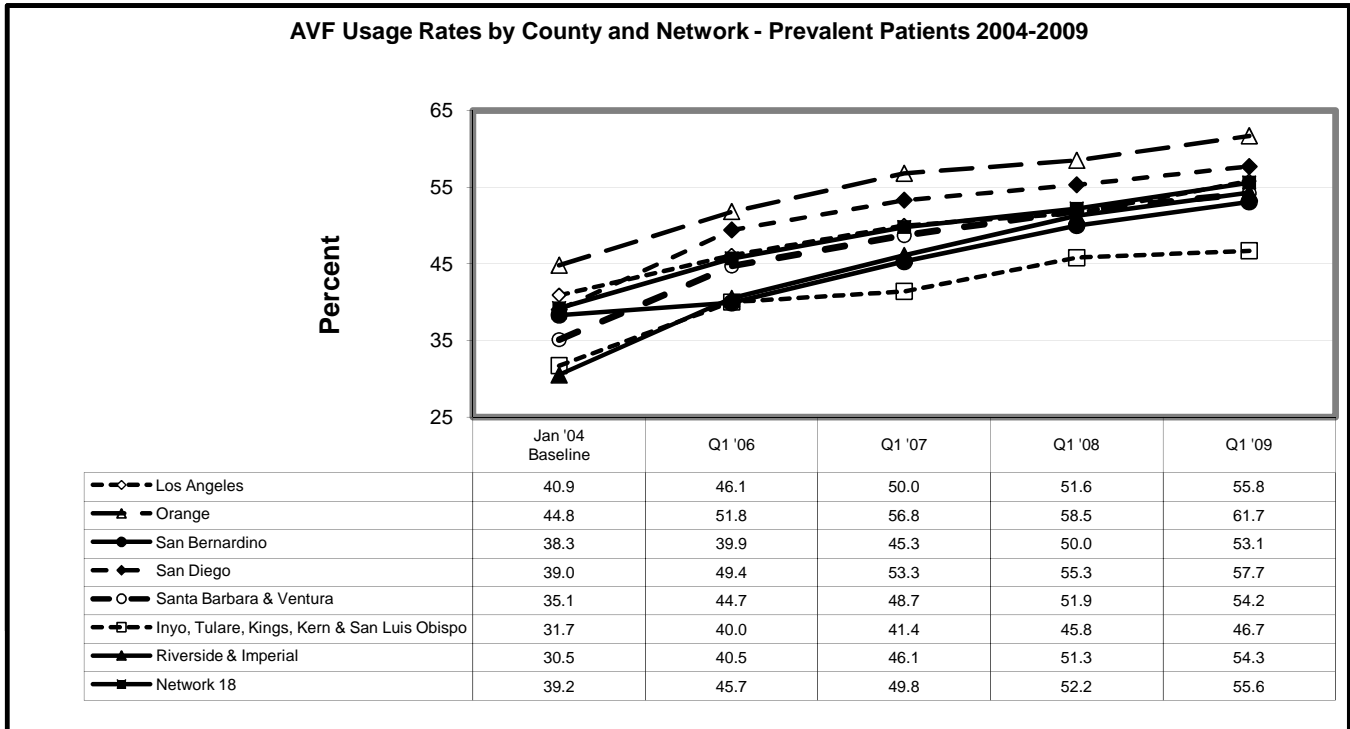
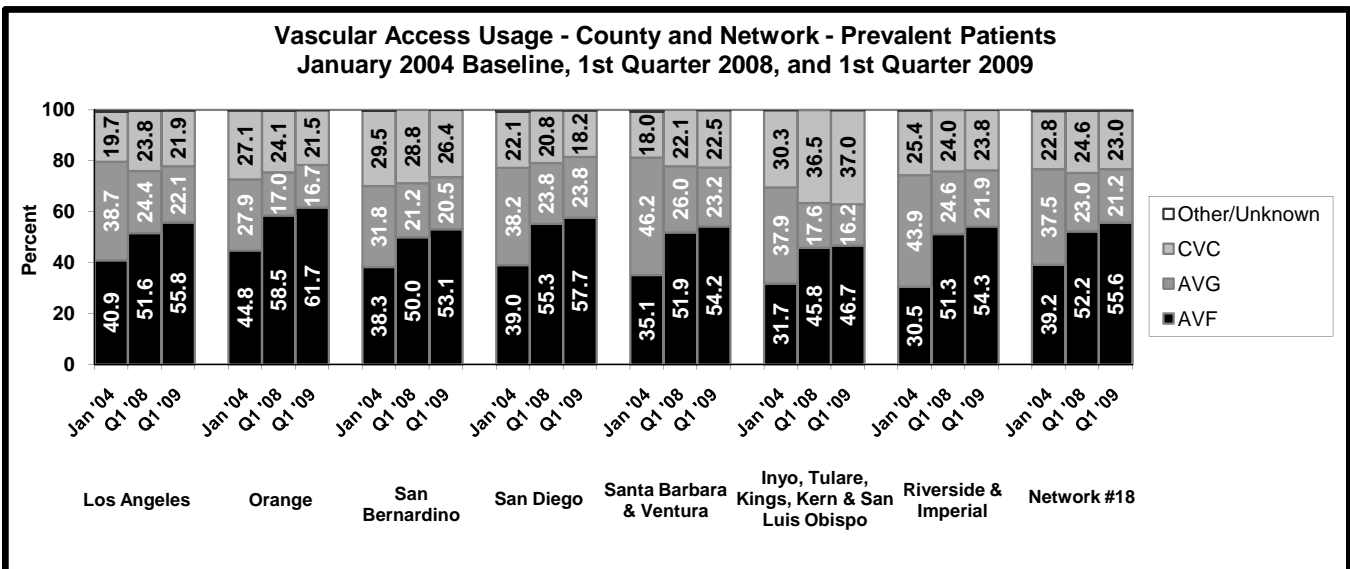


The Fistula First Breakthrough Initiative is a national campaign to increase AV Fistula (AVF) rates at every dialysis facility. The Center for Medicare and Medicaid Services (CMS) has set a national goal of 66% AVF use rate for prevalent<sup>1</sup> patients by 2009. AVF placement rates for new (incident<sup>2</sup>) patients should be at least 50%. Please use the information provided in these charts and tables to help you with your continuing improvement efforts.



Note: Quarterly data reflect an average of monthly data reported for the quarter.

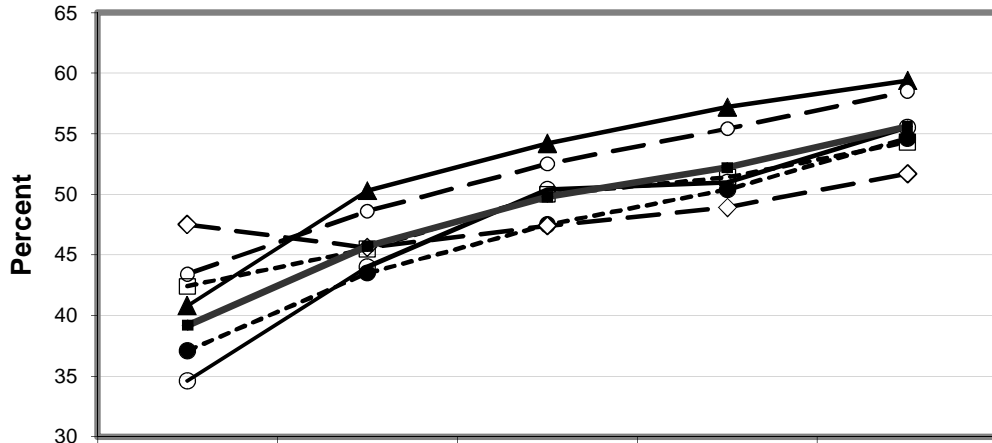


<sup>1</sup> Prevalent patients are all patients belonging on the facility patient census at the end of the month.

<sup>2</sup> Incident patients are patients beginning dialysis for the first time ever during a reporting period.

Note: Quarterly data reflect an average of monthly data reported for the quarter.

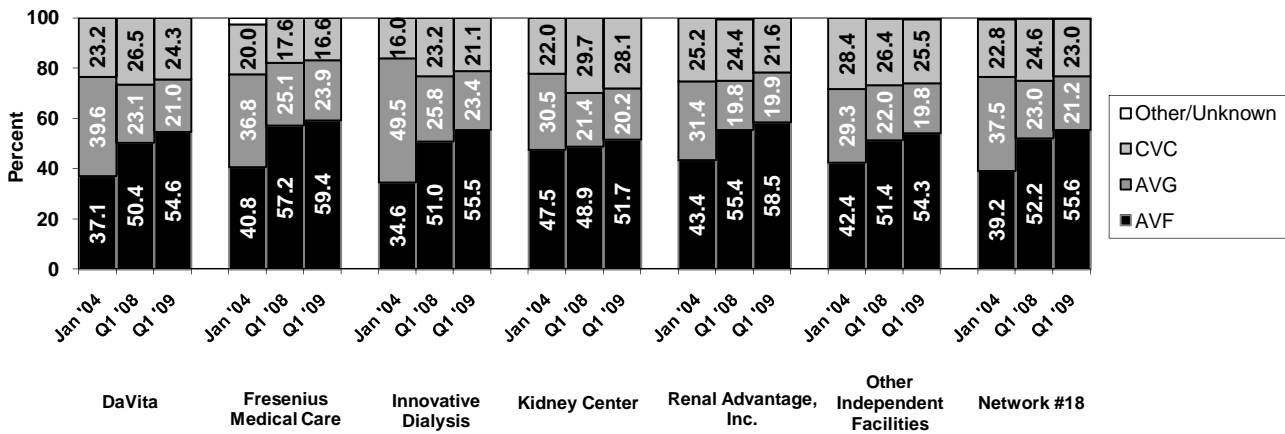
**AVF Usage Rates by Corporate Affiliation and Network - Prevalent Patients 2004-2009**



	Jan '04 Baseline	Q1 '06	Q1 '07	Q1 '08	Q1 '09
● - DaVita	37.1	43.5	47.5	50.4	54.6
▲ - Fresenius Medical Care	40.8	50.3	54.2	57.2	59.4
◻ - Innovative Dialysis	34.6	44.0	50.4	51.0	55.5
◇ - Kidney Center	47.5	45.6	47.4	48.9	51.7
○ - Renal Advantage, Inc.	43.4	48.6	52.5	55.4	58.5
◻ - Other Independent Facilities	42.4	45.5	50.0	51.4	54.3
■ - Network 18	39.2	45.7	49.8	52.2	55.6

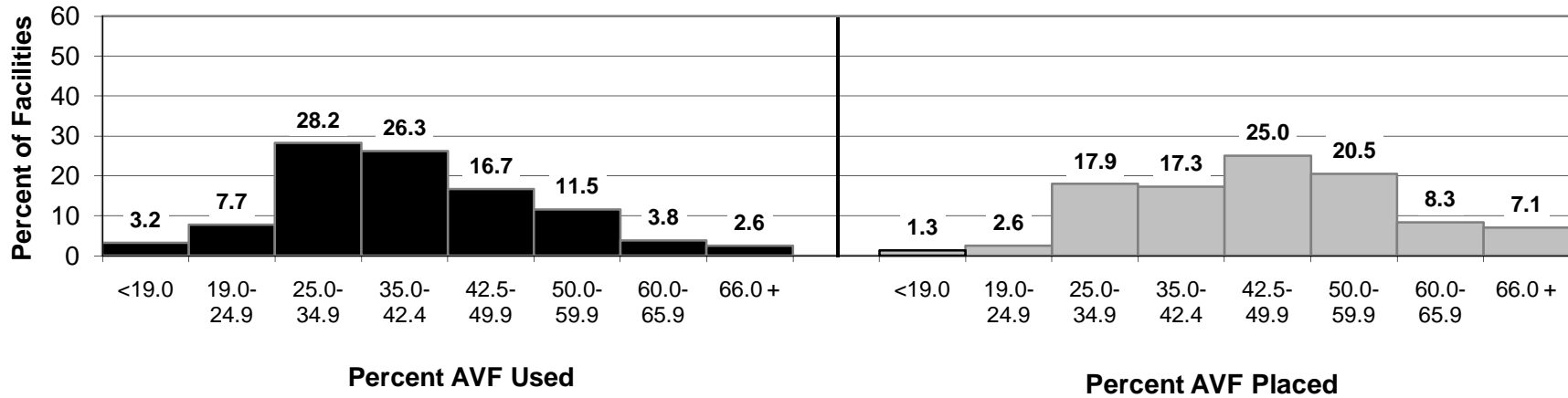
Note: Quarterly data reflect an average of monthly data reported for the quarter.

**Vascular Access Usage - Corporate Affiliation and Network - Prevalent Patients  
January 2004 Baseline, 1st Quarter 2008, and 1st Quarter 2009**

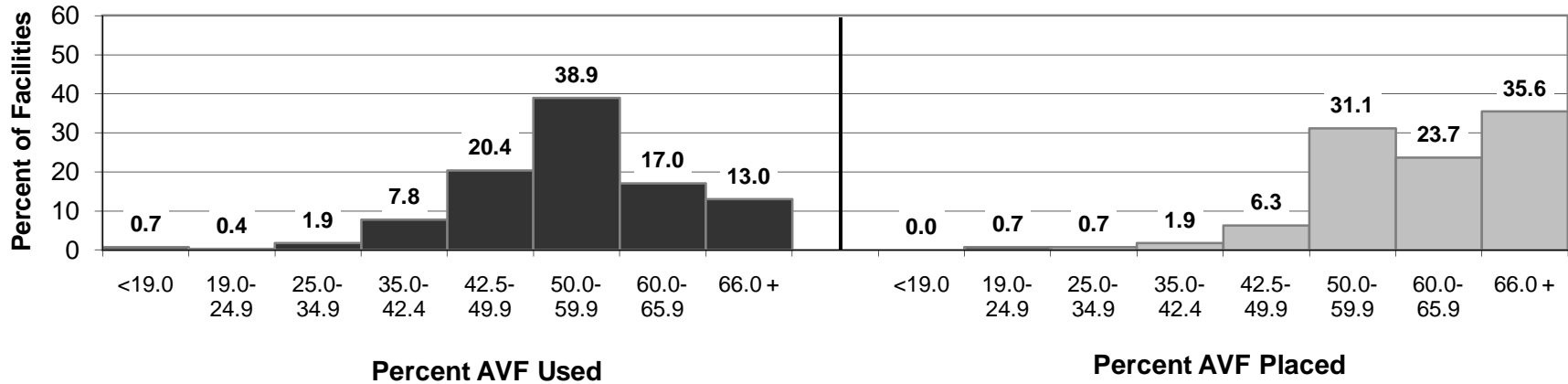


Note: Quarterly data reflect an average of monthly data reported for the quarter.

**Percent AVF Used / Placed  
January 2004 Baseline (156 Facilities, Prevalent Patients)  
Network #18**

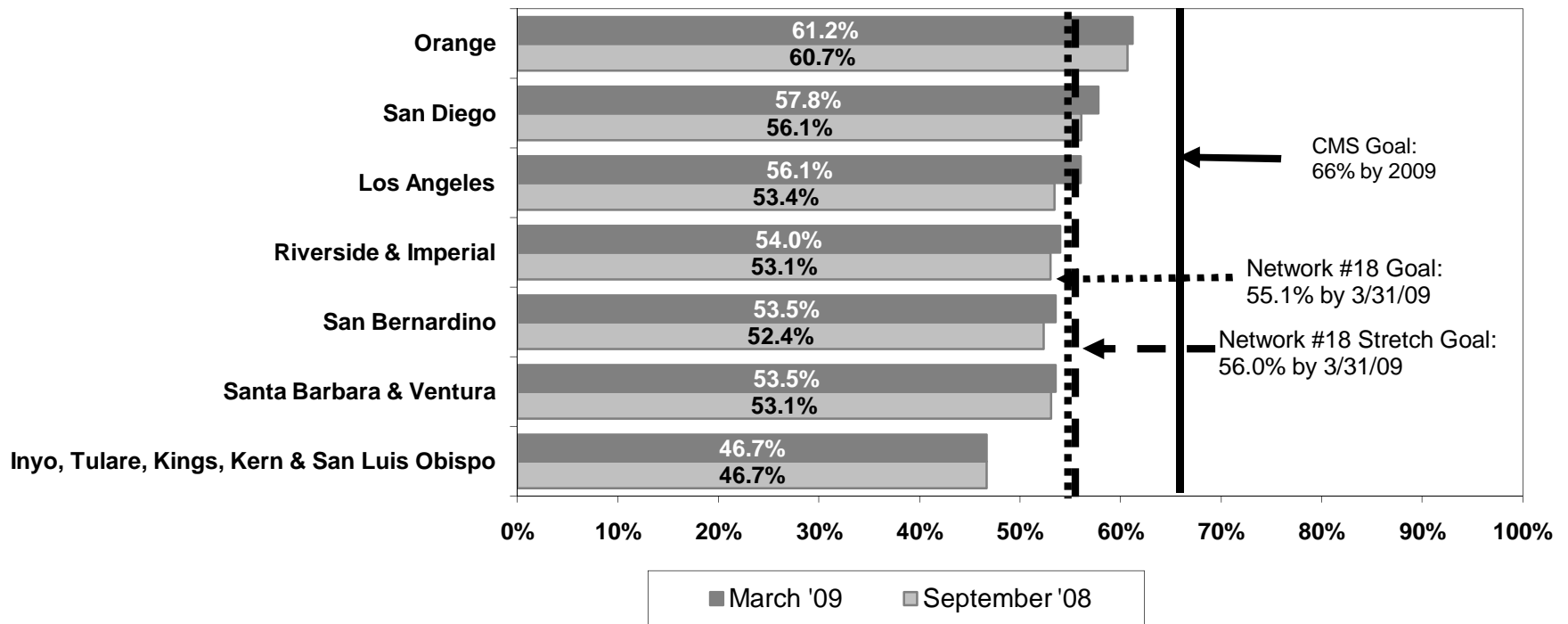


**Percent AVF Used / Placed  
1st Quarter 2009 (270 Facilities, Prevalent Patients)  
Network #18**



Note: Quarterly data reflect an average of monthly data reported for the quarter.

### Comparison of Prevalent AVF Usage Rates by Area in Rank Order



**Data Source:**

LDO data from electronic database for the Fistula First project.  
 Non-LDO facility data collected individually from each facility.

**Please call Network #18 at 323-962-2020 if you have questions about this report.**