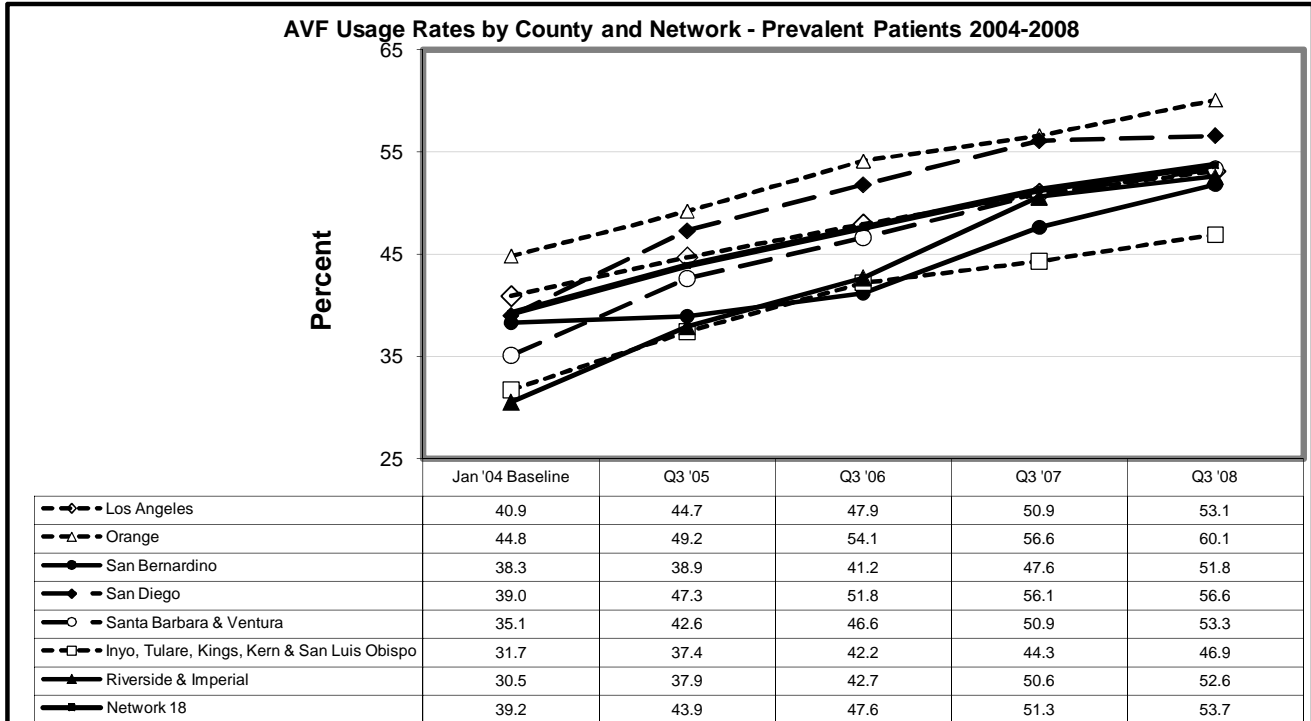


ESRD Network #18 Summary

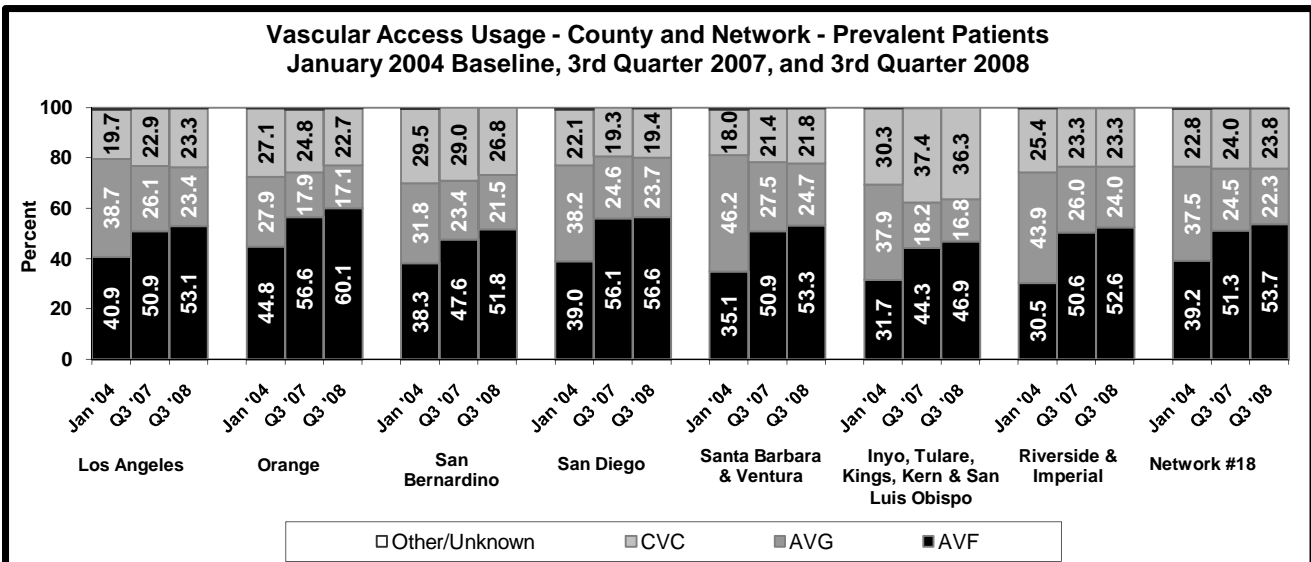
Fistula First Supplemental Feedback Report

January 2004 and 3rd Quarters of 2005, 2006, 2007, and 2008

The Fistula First Breakthrough Initiative is a national campaign to increase AV Fistula (AVF) rates at every dialysis facility. The Center for Medicare and Medicaid Services (CMS) has set a national goal of 66% AVF use rate for prevalent¹ patients by 2009. AVF placement rates for new (incident²) patients should be at least 50%. Please use the information provided in these charts and tables to help you with your continuing improvement efforts.



Note: Quarterly data reflect an average of monthly data reported for the quarter.

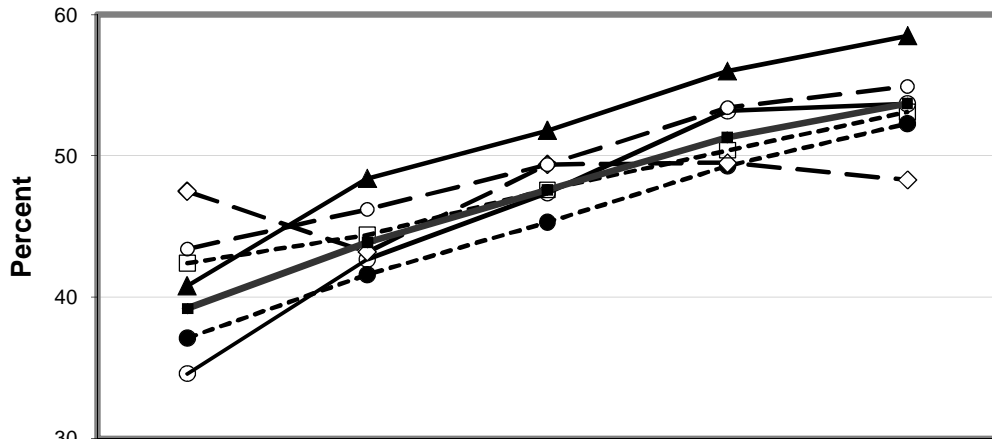


¹ Prevalent patients are all patients belonging on the facility patient census at the end of the month.

² Incident patients are patients beginning dialysis for the first time ever during a reporting period.

Note: Quarterly data reflect an average of monthly data reported for the quarter.

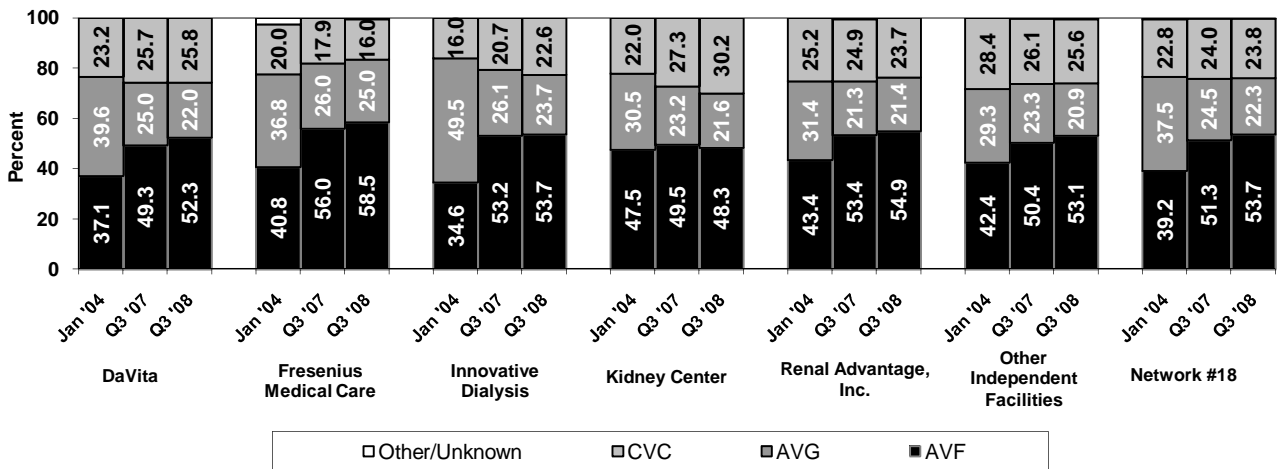
AVF Usage Rates by Corporate Affiliation and Network - Prevalent Patients 2004-2008



	Jan '04 Baseline	Q3 '05	Q3 '06	Q3 '07	Q3 '08
● - DaVita	37.1	41.6	45.3	49.3	52.3
▲ - Fresenius Medical Care	40.8	48.4	51.8	56.0	58.5
◻ - Innovative Dialysis	34.6	42.7	47.4	53.2	53.7
◇ - Kidney Center	47.5	43.2	49.4	49.5	48.3
○ - Renal Advantage, Inc.	43.4	46.2	49.4	53.4	54.9
◻ - Other Independent Facilities	42.4	44.4	47.6	50.4	53.1
■ - Network 18	39.2	43.9	47.6	51.3	53.7

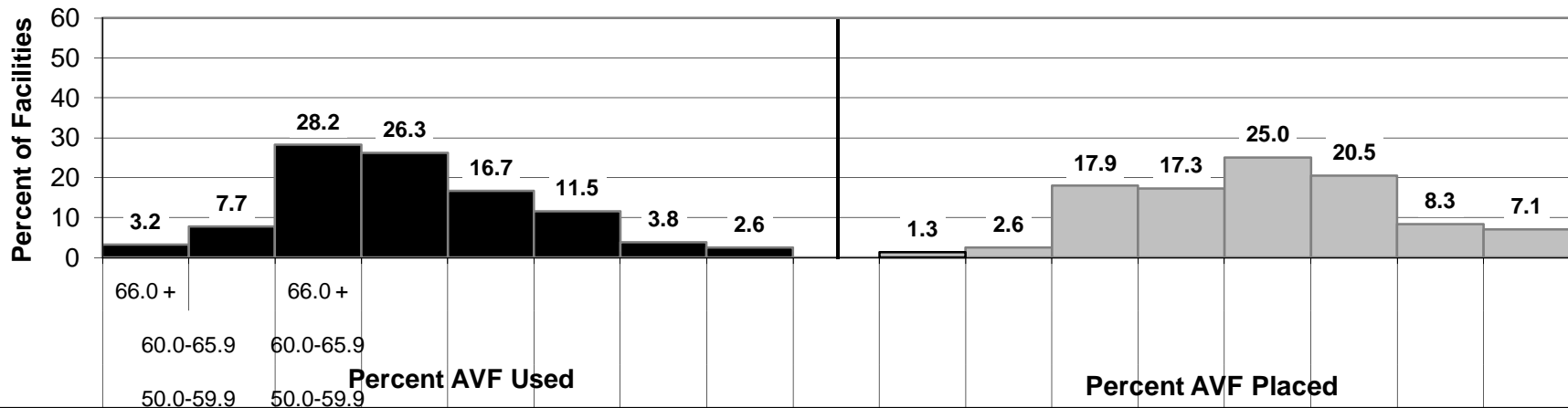
Note: Quarterly data reflect an average of monthly data reported for the quarter.

**Vascular Access Usage - Corporate Affiliation and Network - Prevalent Patients
January 2004 Baseline, 3rd Quarter 2007, and 3rd Quarter 2008**

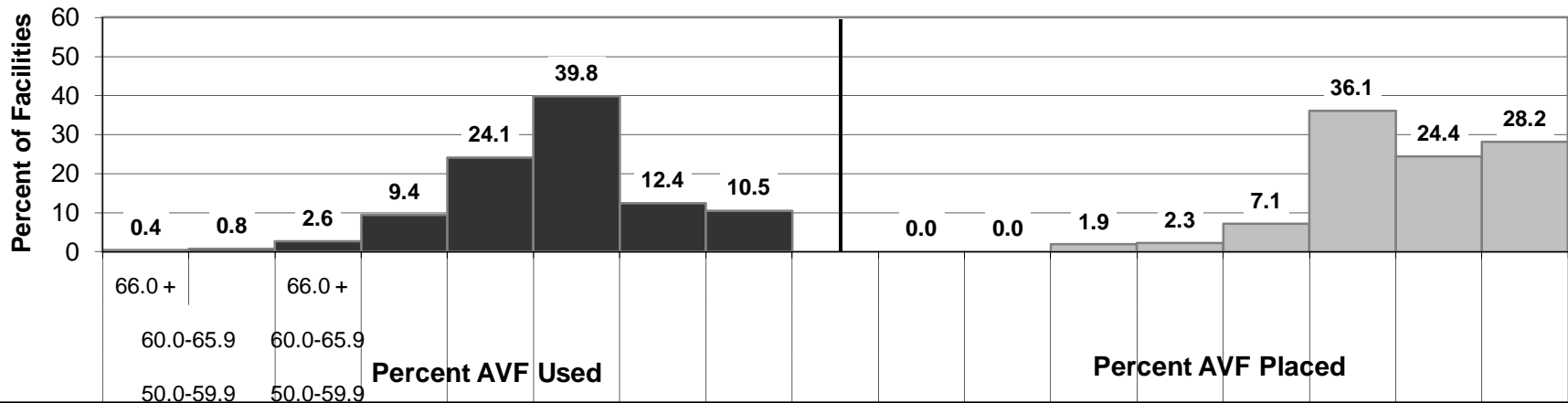


Note: Quarterly data reflect an average of monthly data reported for the quarter.

**Percent AVF Used / Placed
January 2004 Baseline (156 Facilities, Prevalent Patients)
Network #18**

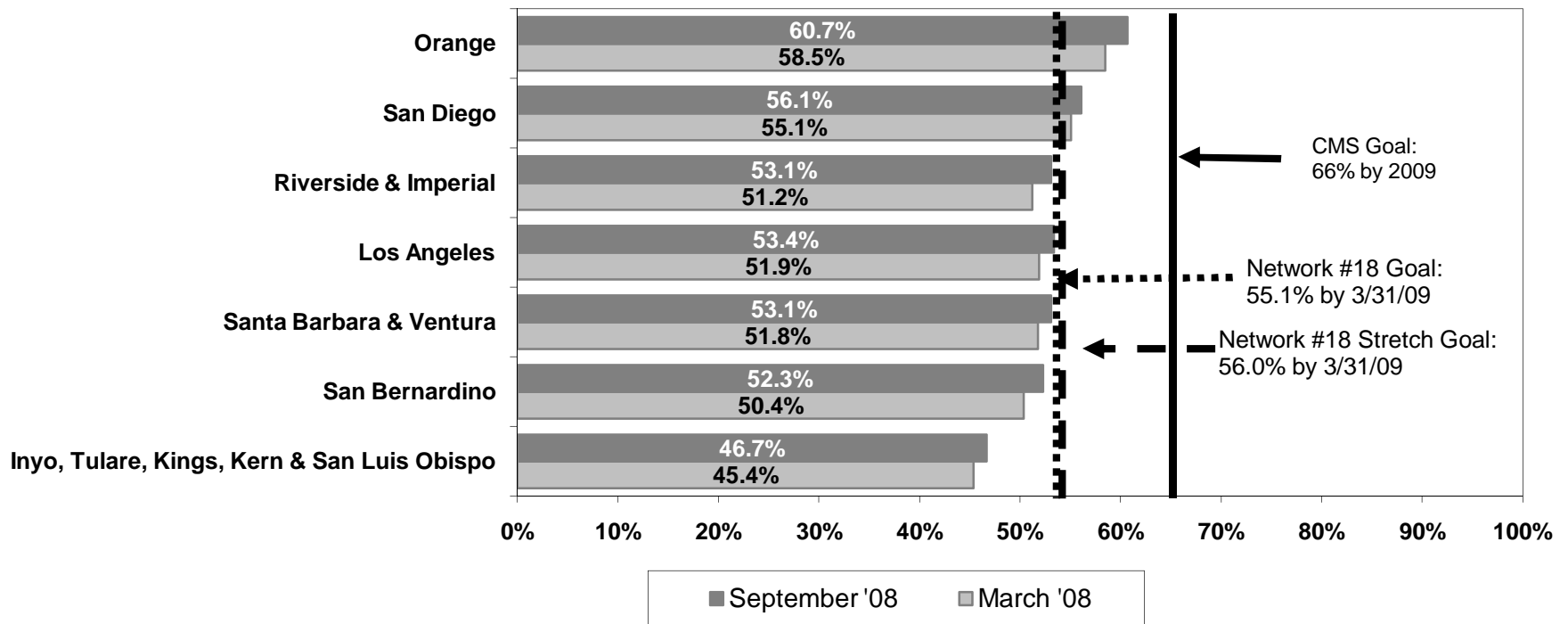


**Percent AVF Used / Placed
3rd Quarter 2008 (266 Facilities, Prevalent Patients)
Network #18**



Note: Quarterly data reflect an average of monthly data reported for the quarter.

Comparison of Prevalent AVF Usage Rates by Area in Rank Order



Data Source:

LDO data from electronic database for the Fistula First project.
 Non-LDO facility data collected individually from each facility.

Please call Network #18 at 323-962-2020 if you have questions about this report.