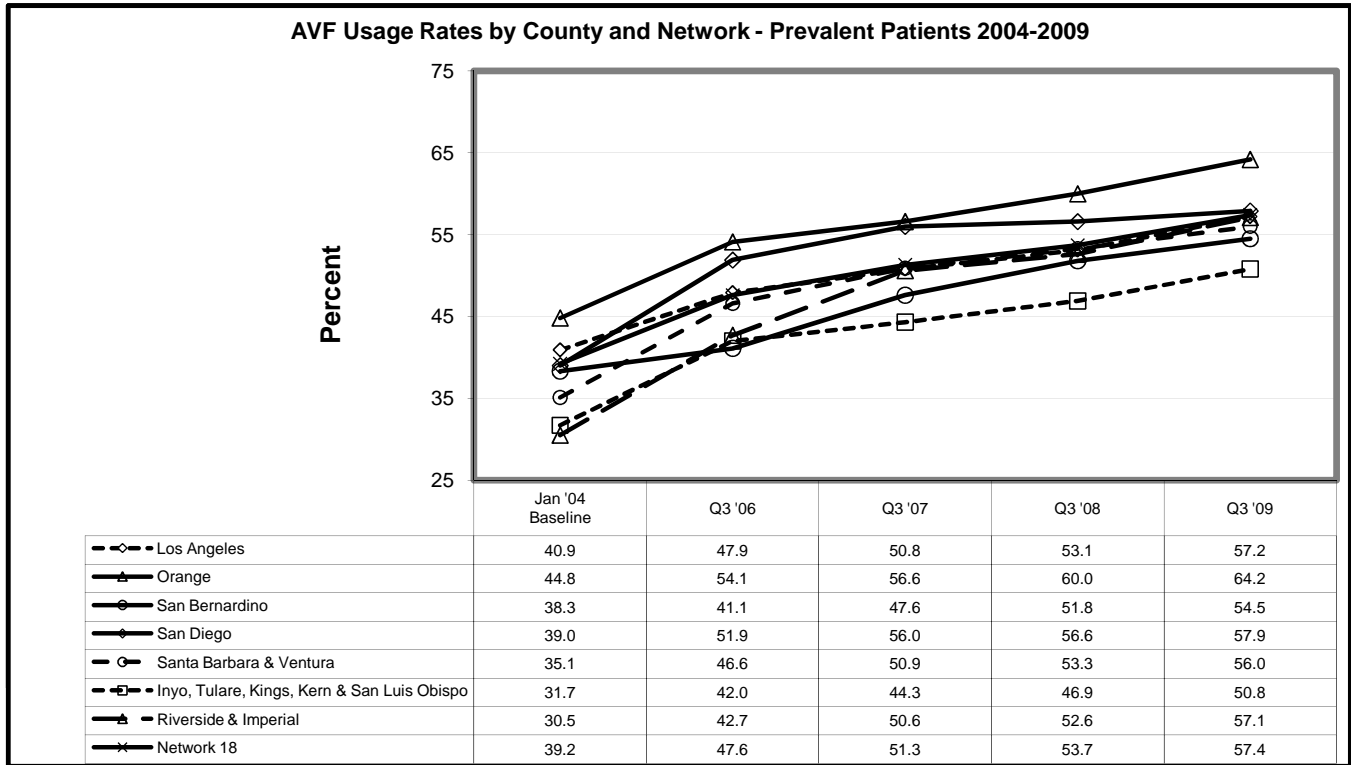


ESRD Network #18 Summary

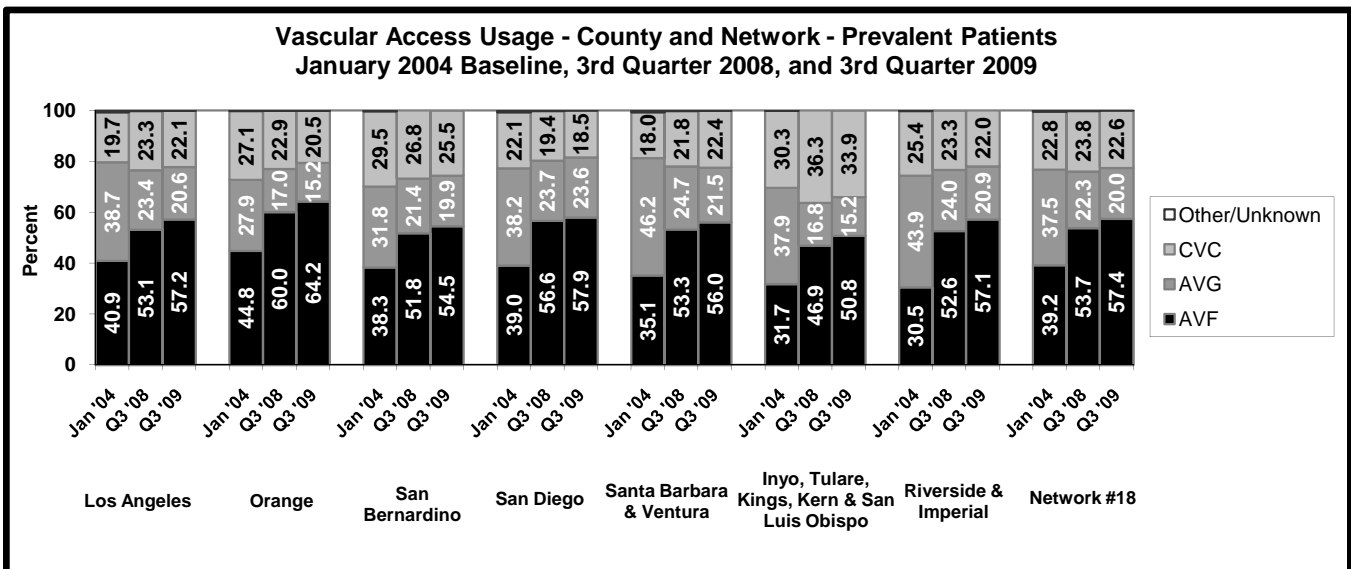
Fistula First Supplemental Feedback Report

January 2004 and 3rd Quarters of 2006, 2007, 2008, and 2009

The Fistula First Breakthrough Initiative is a national campaign to increase AV Fistula (AVF) rates at every dialysis facility. The Center for Medicare and Medicaid Services (CMS) has set a national goal of 66% AVF use rate for prevalent¹ patients by 2009. AVF placement rates for new (incident²) patients should be at least 50%. Please use the information provided in these charts and tables to help you with your continuing improvement efforts.



Note: Quarterly data reflect an average of monthly data reported for the quarter.

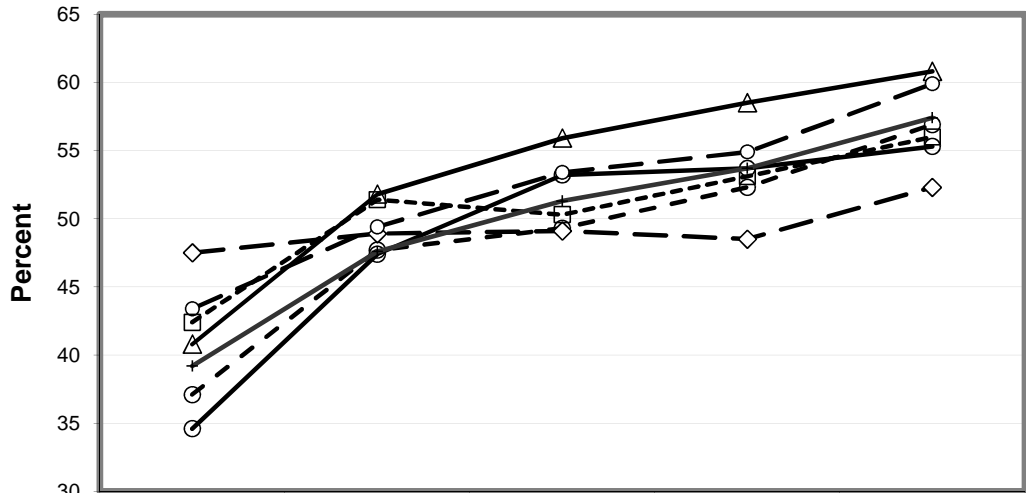


¹ Prevalent patients are all patients belonging on the facility patient census at the end of the month.

² Incident patients are patients beginning dialysis for the first time ever during a reporting period.

Note: Quarterly data reflect an average of monthly data reported for the quarter.

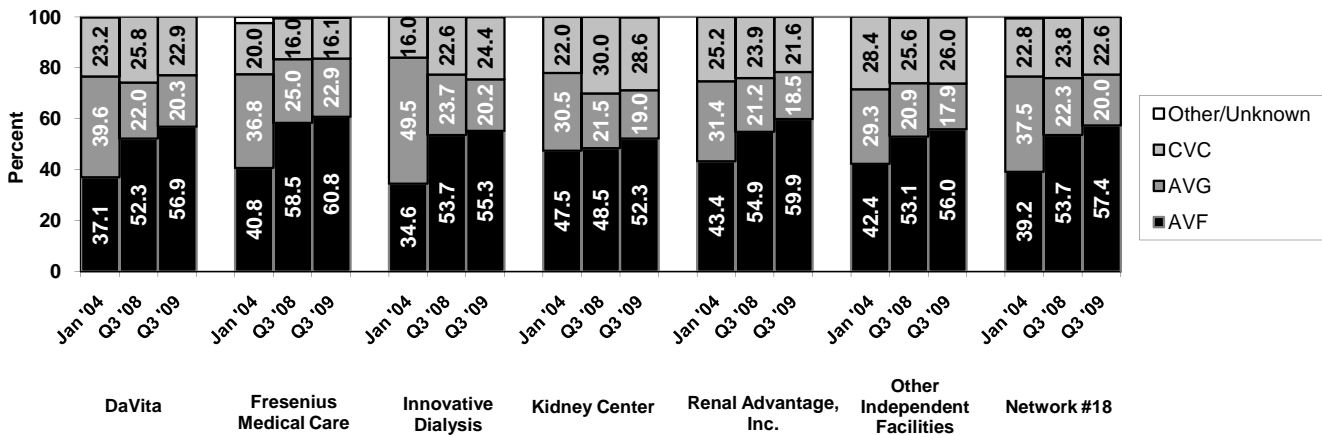
AVF Usage Rates by Corporate Affiliation and Network - Prevalent Patients 2004-2009



	Jan '04 Baseline	Q3 '06	Q3 '07	Q3 '08	Q3 '09
DaVita	37.1	47.7	49.3	52.3	56.9
Fresenius Medical Care	40.8	51.8	55.9	58.5	60.8
Innovative Dialysis	34.6	47.4	53.2	53.7	55.3
Kidney Center	47.5	48.9	49.1	48.5	52.3
Renal Advantage, Inc.	43.4	49.4	53.4	54.9	59.9
Other Independent Facilities	42.4	51.4	50.3	53.1	56.0
Network 18	39.2	47.6	51.3	53.7	57.4

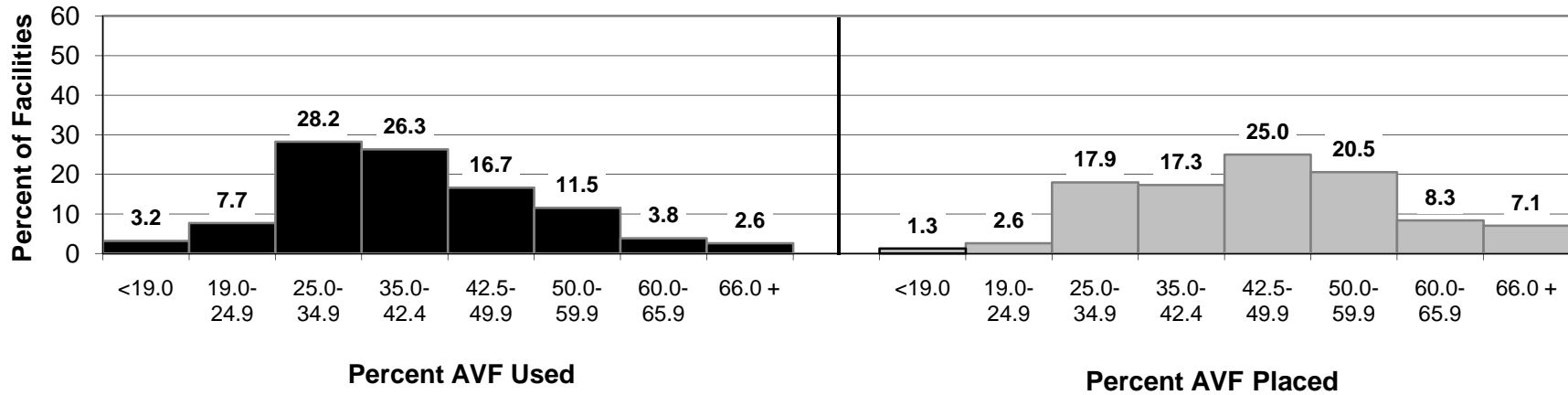
Note: Quarterly data reflect an average of monthly data reported for the quarter.

**Vascular Access Usage - Corporate Affiliation and Network - Prevalent Patients
January 2004 Baseline, 3rd Quarter 2008, and 3rd Quarter 2009**

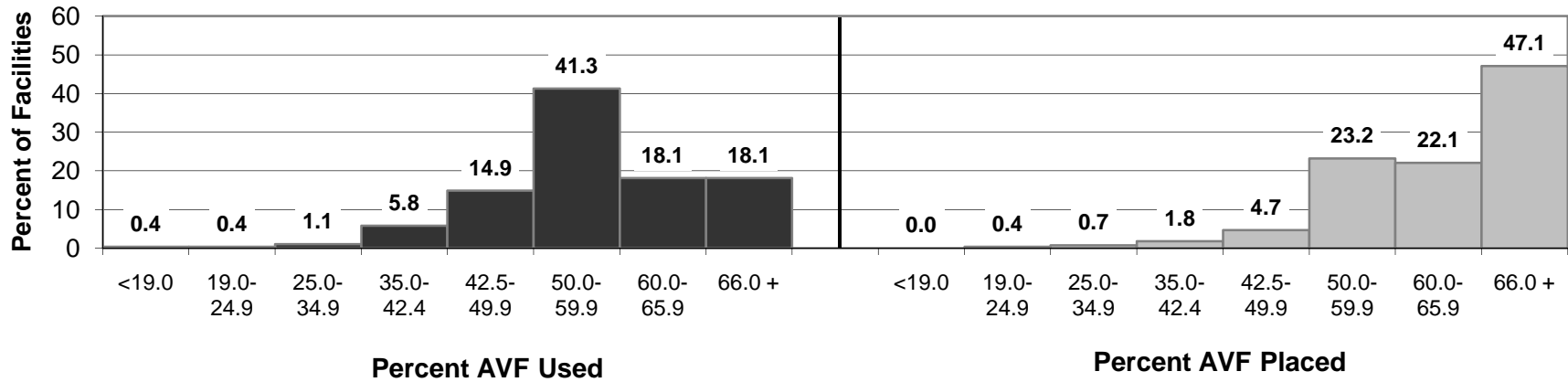


Note: Quarterly data reflect an average of monthly data reported for the quarter.

**Percent AVF Used / Placed
January 2004 Baseline (156 Facilities, Prevalent Patients)
Network #18**

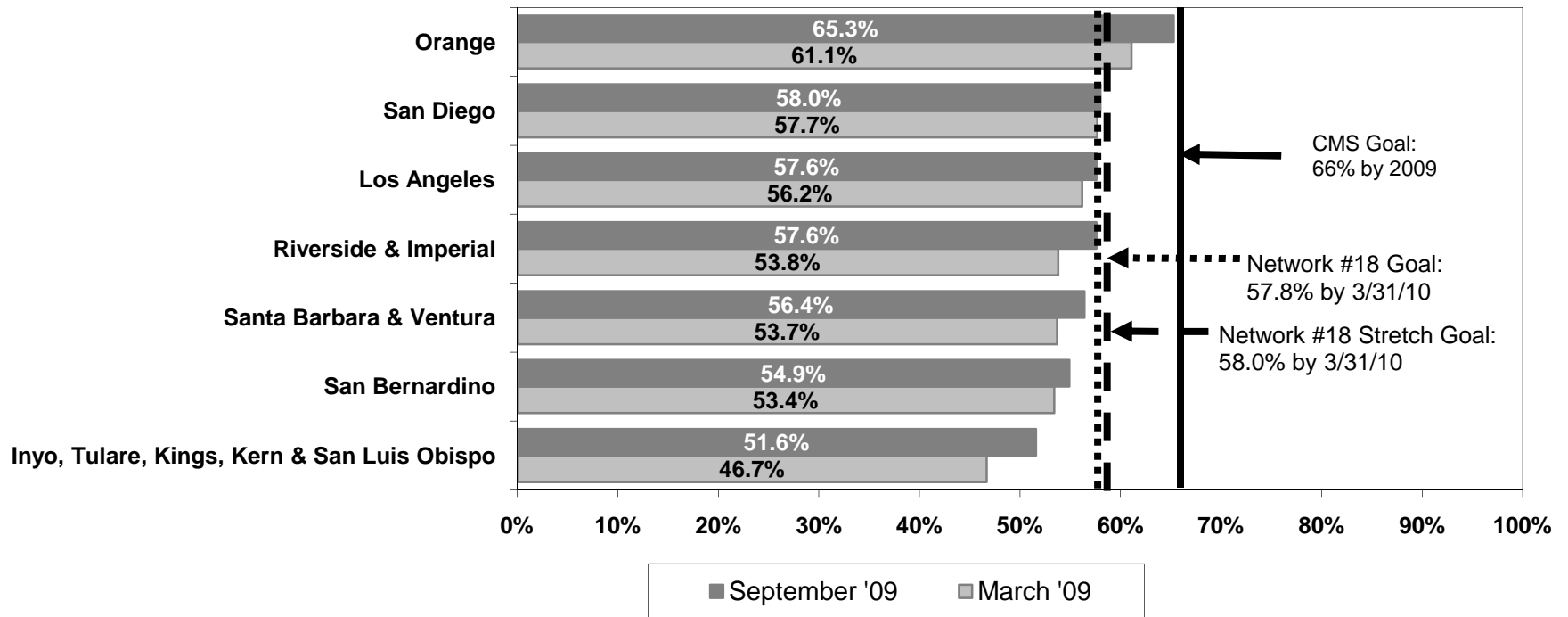


**Percent AVF Used / Placed
3rd Quarter 2009 (276 Facilities, Prevalent Patients)
Network #18**



Note: Quarterly data reflect an average of monthly data reported for the quarter.

Comparison of Prevalent AVF Usage Rates by Area in Rank Order



Data Source:

LDO data from electronic database for the Fistula First project.
 Non-LDO facility data collected individually from each facility.

Please call Network #18 at 323-962-2020 if you have questions about this report.