

# *Vascular Access QAPI Project*

- Please place this call on MUTE– not hold.
  - Some facilities' hold button have music playing and it will disrupt the conference.
- If you do not have a mute button, \* 6 should allow you to mute your phone.
- To un-mute your phones during discussion or question sessions, \* 6 will un-mute you line.

**FOR THE CURTISY OF EVERYONE ON THIS CALL, PLEASE MUTE YOUR PHONES UNTIL REQUESTED TO UN-MUTE THEM. - *Thank you.***

*The WebEx will start in a few minutes. Thank you for your patience.*



*Southern California Renal Disease Council, Inc.*  
*ESRD Network 18*

*Vascular Access QAPI Project*  
**Shean Strong, QI Manager**  
**Lisle Mukai, QI Coordinator**



**Quality Assessment and Performance Improvement (QAPI) Project**

**WebEx Conference**

**Los Angeles, Ca**

**September 28, 2011**

## *Housekeeping Notes:*

- Place this call on MUTE– **not hold.**
- If you do not have a mute button, \* 6 should allow you to mute your phone.
- Hold all your questions until the end of the presentation.
- Complete the evaluation at the end of this presentation.
- This presentation will be recorded and posted to the Network website.



## *Objectives of WebEx*

- Present Network Fistula First data/information.
- Present the project.
- Present goals and objectives for the project.
- Present basic quality improvement processes.
- Share best practices learned from previous vascular access QAPI projects.

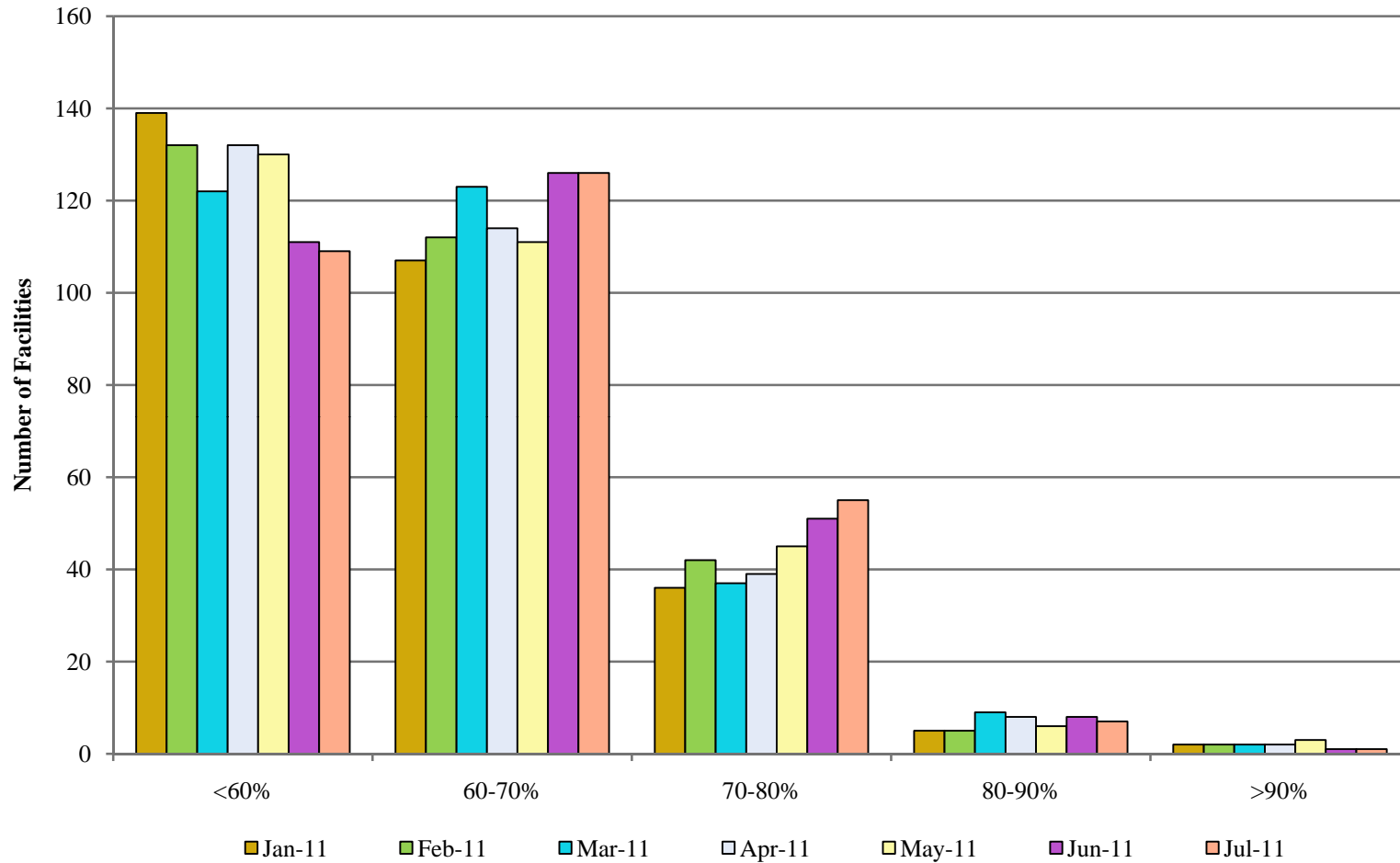


## *Network 18 AV Fistula Data*

- Network 18 goal = 62.3% by March 2012
- Network 18 stretch goal = 63.0% by March 2012
- Network 18 & the Medical Review Board (MRB) will monitor all facilities with AVF rates < 60%.



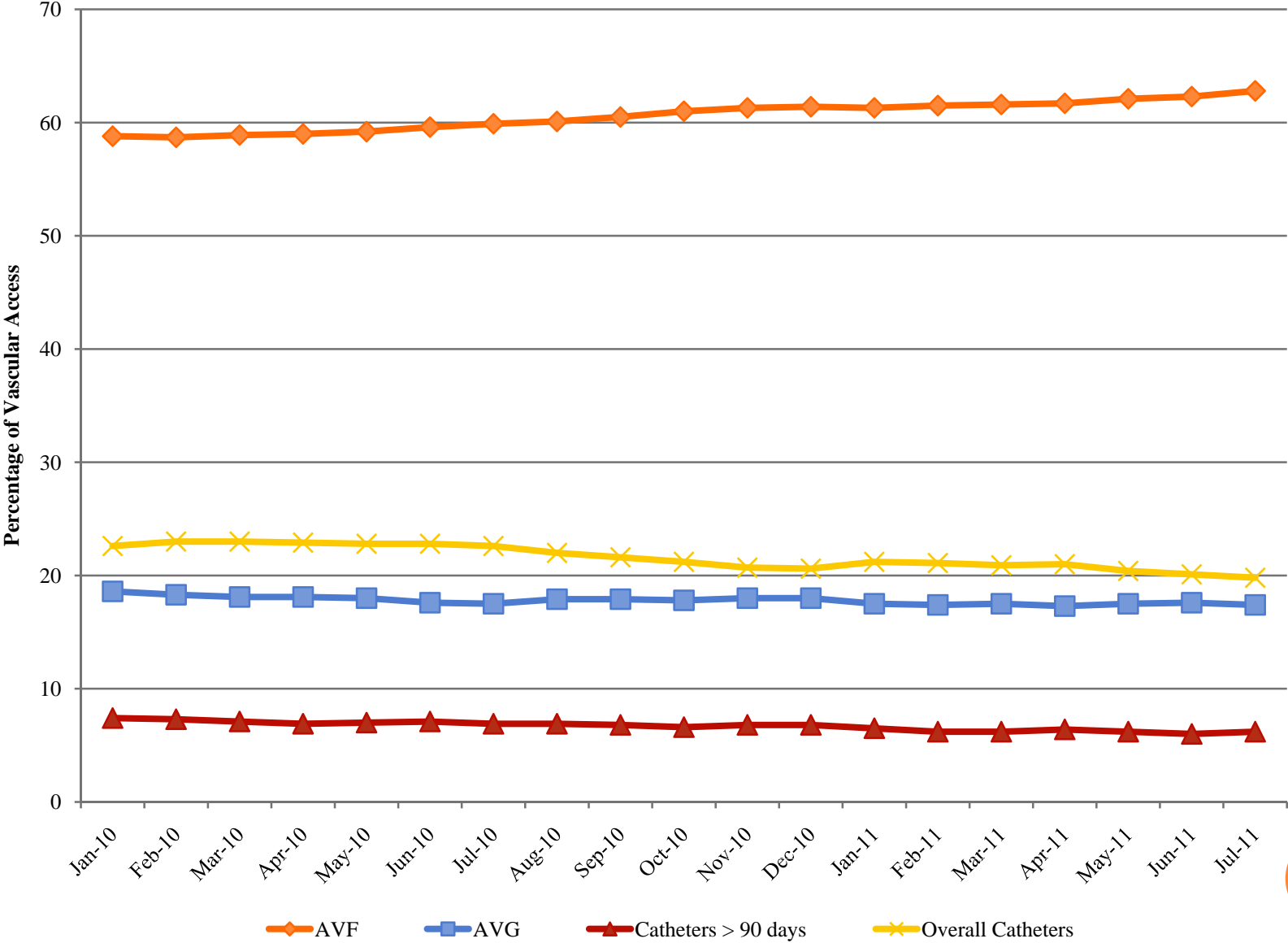
### Network 18 AVF Percentile Breakdown



**63.4% of facilities with AVF rate > 60%**  
**36.3% of facilities with AVF rate < 60%**



### Network 18 Vascular Access Trend



## *Proposed Payment Year 2014 ESRD QIP: Vascular Access Type*

- The vascular access type would consist of 2 subcomponent measures, which would receive a separate performance rate:
  - % of hemodialysis patients using AVF during last treatment of the month.
  - % of hemodialysis patients with intravenous catheter for 90 days prior to last dialysis session.
- Scores would be averaged to derive the vascular access rate.
- CMS website - CMS ESRD QIP information:
  - [http://www.cms.gov/esrdqualityimproveinit/01\\_overview.asp?](http://www.cms.gov/esrdqualityimproveinit/01_overview.asp?)



# *Vascular Access QAPI Project*



## *Background and Description of the Project*

- Improvements not maintained or improved over time.
  - Management/staff turnovers.
  - Lack of enthusiasm or effort to continue the process.
  - Not enough time or a decrease in the amount of time to educate patients/families.
  - Focus of the facility has changed
    - Facility improving so they no longer see the need to concentrate efforts;
    - Network project had concluded;
    - Minimum AVF rate achieved; etc.



## *Background and Description of the Project*

*(continued)*

- Encourage facilities to continue improving.
- Focus on facility's issues with improving and maintaining minimum AVF rate.



## *Slide Heading*

- Your text should begin at this point.
- Your text should begin at this point.
- Your text should begin at this point.



## *Slide Heading*

### **Sub-Heading**

- Tour text should begin at this point.
- Your text should begin at this point.
- Your text should begin at this point.



## *Slide Heading*

- Your text should begin at this point.
- Your text should begin at this point.
- Your text should begin at this point.
- Your text should begin at this point.
- Your text should begin at this point.
- Your text should begin at this point.



Your text should begin at this point.



*Southern California Renal Disease Council, Inc.  
ESRD Network 18*

*Presenter's Name  
Presenter's Title  
Presenter's email address*



**6255 Sunset Boulevard, Suite 2211 • Los Angeles • California • 90028  
(323) 962-2020 • (323) 962-2891/Fax • [www.esrdnetwork18.org](http://www.esrdnetwork18.org)**